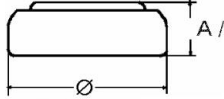


Type Number..... 364
Designation IEC..... SR 60
System..... Silver oxide/ Zinc /
 NaOH - Electrolyte



Nominal Voltage..... 1,55 V
Typical Capacity C..... 17 mAh
 Load 68 kOhm, at 20°C down to 1.2 V

Weight (approx.)..... 0,31 g
Volume..... 0,07 ccm

Temperature Ranges min max.
Storage..... 0 °C 60 °C
Discharge..... 0 °C 60 °C

Dimensions min max.
Diameter (A)..... 6,5 6,8
Height (A/B)..... 1,9 2,15

Segment..... Watch

Typical Capacities (at 20°C)

Discharge Type	Load	End Voltage:	1.2V
Continuous 24h/d, 7d/w	68000 Ω	Time: Capacity : Energy:	810 h 17 mAh 25 mWh

No publication or circulation of data to third parties without consent of VARTA Consumer Batteries

All Data contained herein is for single cells For battery applications, performance data may vary from single cell data, depending on specific battery configuration